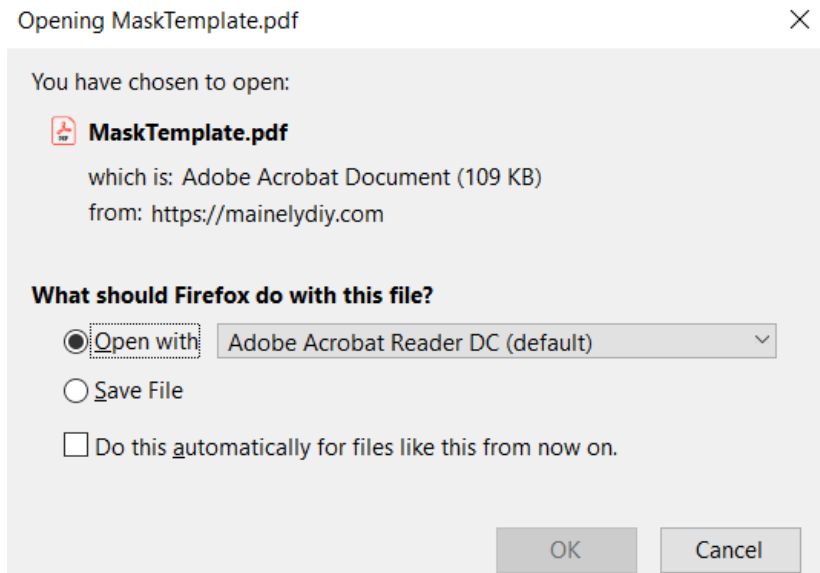


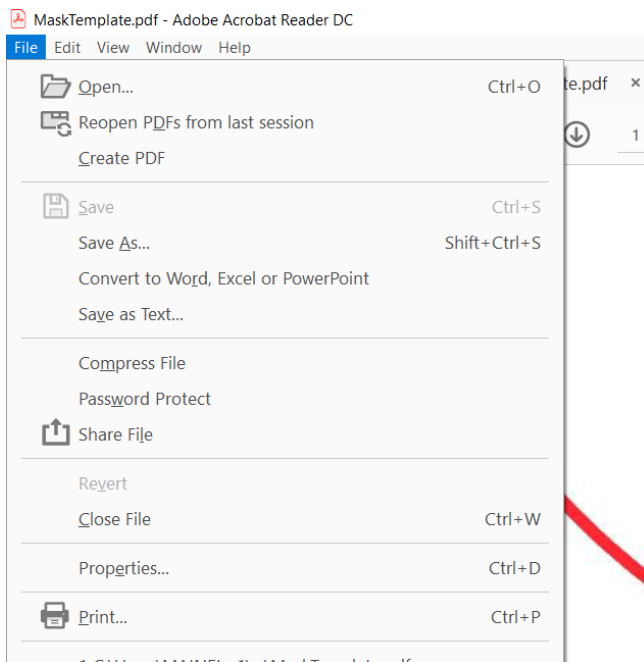
Download the file



Open the file with Adobe reader



Choose File and then print from pull down menu



Choose Actual Size and then print

Print



Printer: Properties Advanced [Help ?](#)

Copies: Print in grayscale (black and white)
 Save ink/toner ⓘ

Pages to Print

All
 Current page
 Pages
▶ More Options

Page Sizing & Handling ⓘ

Size Poster Multiple Booklet

Fit
 Actual size
 Shrink oversized pages
 Custom Scale: %
 Choose paper source by PDF page size

Print on both sides of paper

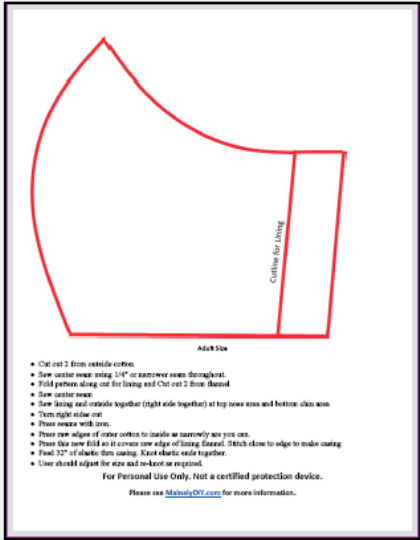
Orientation:
 Auto portrait/landscape
 Portrait
 Landscape

Page Setup...

Comments & Forms

Summarize Comments

Document: 8.5 x 11.0in
8.5 x 11 Inches



- Cut out 1 from outside contour
- Sew center seam using 1/4" or narrower seam allowance.
- Fold pattern along cut for lining and Cut out 2 from front.
- Sew center seam.
- Sew lining and outside together (right side together) at top, seam area and bottom chin area.
- Turn right side out.
- Press seam with iron.
- Press raw edges of center contour to inside as narrowly as you can.
- Press the raw edge of the center raw edge of lining down. Match close to edge to make casing.
- Press 3/4" of elastic down casing. Knot elastic ends together.
- User should adjust the size and make-up as required.

For Personal Use Only. Not a certified protection device.
Please see [Mandibor.com](#) for more information.

< ▼ >

Page 1 of 2

Print Cancel